

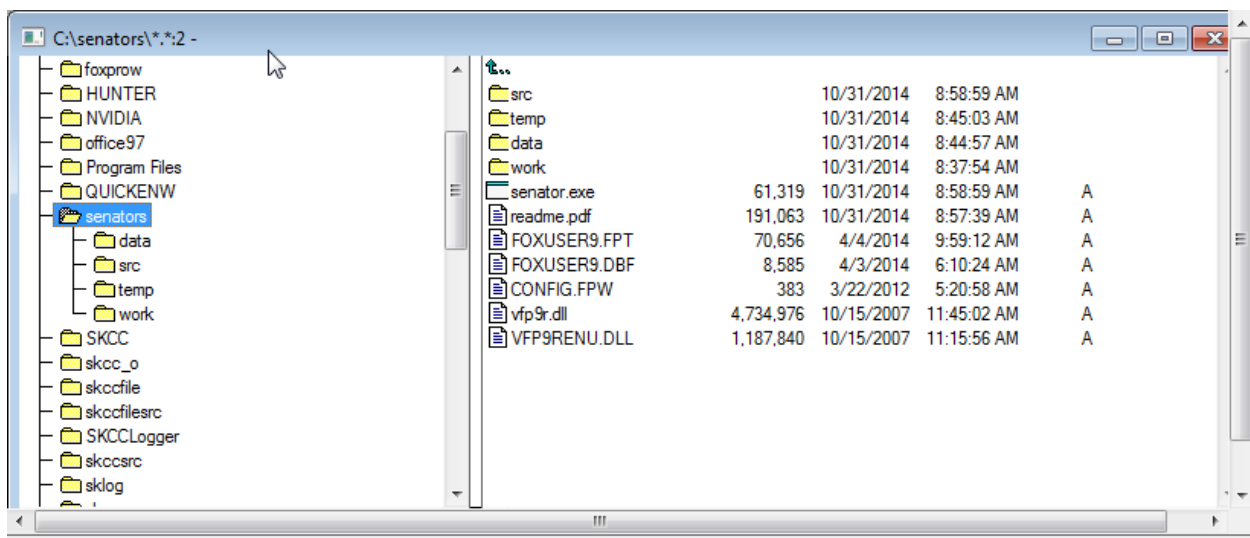
## Using SENATOR

This program generates a list of needed Tribunes in NEEDS.CSV and a list of worked tribunes in WORKED.CSV. It uses data from the tribunelist and skccdata on the SKCC website.

Only SKCC members who have achieved their Tx8 tribune award should consider using this program. You can't start your senator list until you have that award.

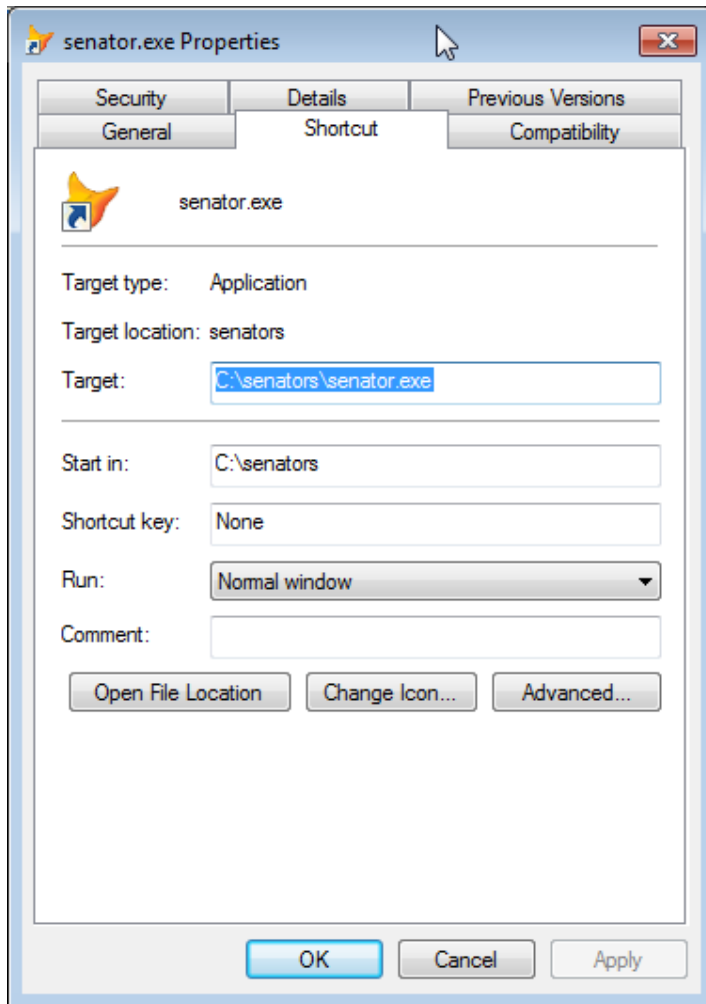
To install:

1. Download the senators.zip file to a directory on your hard drive.
2. Rename senators.zip to senators.zip.
3. Unzip the senators.zip to the c:\ directory. This will create the c:\senators directory and some subs directories. If you have an old version of Senator, delete the c:\senators directory and its entire sub directory before you install this version.



If you feel adventuresome and have Visual Foxpro version 9, I included the source code in the c:\senators\src directory. You can get Visual Foxpro academic version 9 for around \$75 or less on Ebay. The main program is "makesent.prg", if you are interested in application development.

Create a shortcut to c:\senators\senator.exe. The properties should look like below.



The program is slightly interactive. The user must enter his call and pick a log adi file to process. To execute this program, you must execute the following steps in order. The SKCC website files will be automatically downloaded.

1. Generate an ADI file from your log named "mylog adi" or whatever. If you have a choice, I would only include data from your Tx8 date to the present. This will reduce processing time.
2. Start the SENATOR.EXE file with the icon you made earlier.
3. Enter your call into the call input box.
4. Use the "Pick Log ADI File" button to select the adi file you generated in step 1.
5. Push the "Go" button
6. The output files will appear in the C:\senators\work directory named "NEEDS.CSV" and "WORKED.CSV".

This is the main and only screen. Fill in your call and pick the log adi file for input. For the normal senator award, leave the Band Selection radio button on "All Bands". If you want to work on a band endorsement the pick a band you want to process.

Senator Award - Tribunes Needed Form

Version 1a 11/1/2014

Input Your Call: KOLUW

Pick Log ADI File C:\SENATORS\WORK\MYLOG.ADI

Band Selection:

- ☒ All Bands
- ☐ 10 Meters
- ☐ 12 Meters
- ☐ 15 Meters
- ☐ 17 Meters
- ☐ 20 Meters
- ☐ 30 Meters
- ☐ 40 Meters
- ☐ 60 Meters
- ☐ 160 Meters
- ☐ 6 Meters

Go Cancel

The Input/output directory is c:\senators\work. The results will be in this directory.

The needs.csv file is a list ordered by call of the tribunes you need. The worked.csv is a list of the tribunes that are on your senator list, the ones you have worked. This file could be edited slightly and turned into an application for the senator award.

The files in the c:\senators\src directory are:

This is the Visual Foxpro 9.0 source code for this project.

Note: don't confuse the word senator with senators.

